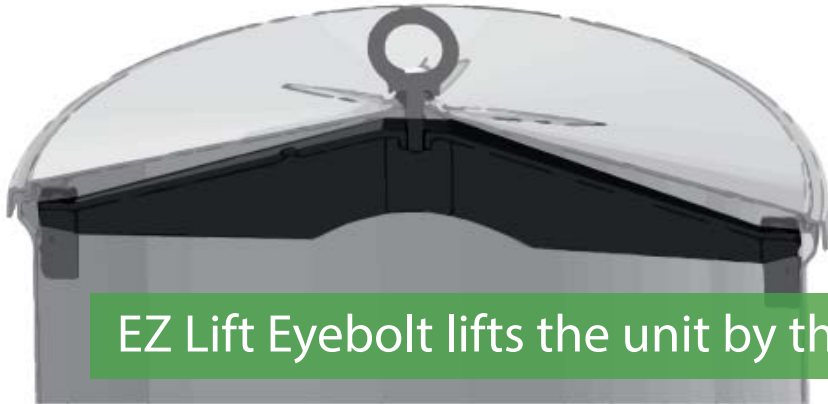


# EZ Lift Eyebolt



EZ Lift Eyebolt lifts the unit by the beam!

Lifting a 37.5 1PH  
and a 150 kVA 3PH  
*together*



Old Method



NEW Method



## EZ Lift Eyebolt Features & Advantages

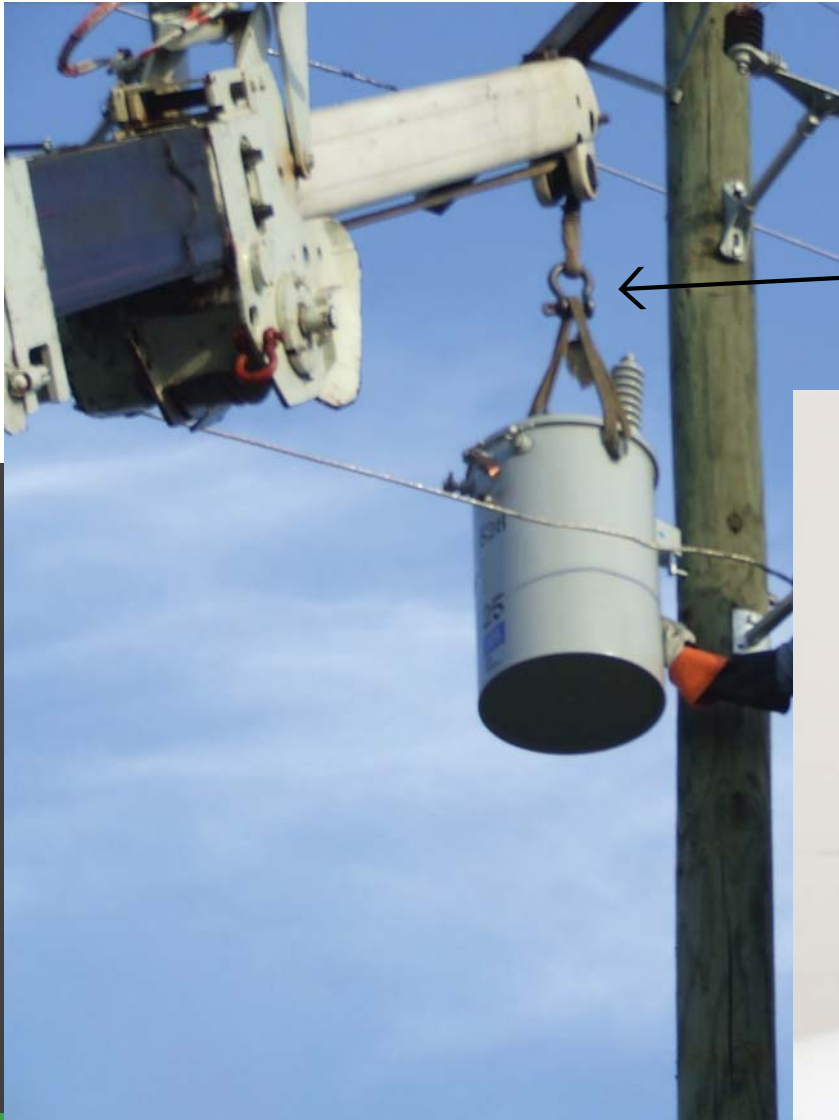
### Safety

- Application: 1,000 lbs and below
- Exceeds IEEE safety rating of 5 to 1
- Creates a safer & quicker connection point
- Increases vertical clearance between lift points and high voltage lines, for added safety

### Save Installation Time & Money

- Allows lifting of unit with the pallet attached
- Makes rotating unit while suspended easier
- Reduces lifting strap usage
- No touching of straps against HV bushings
- Balancing straps no longer needed

# EZ Lift Eyebolt



Old method of lifting transformers shown here requires more vertical clearance.



Power Partners new EZ Lift Eyebolt Increases vertical clearance between lift points and high voltage lines, for added safety